

Esthetic and functional integration with direct composite

Dr.Ali Almasoudi

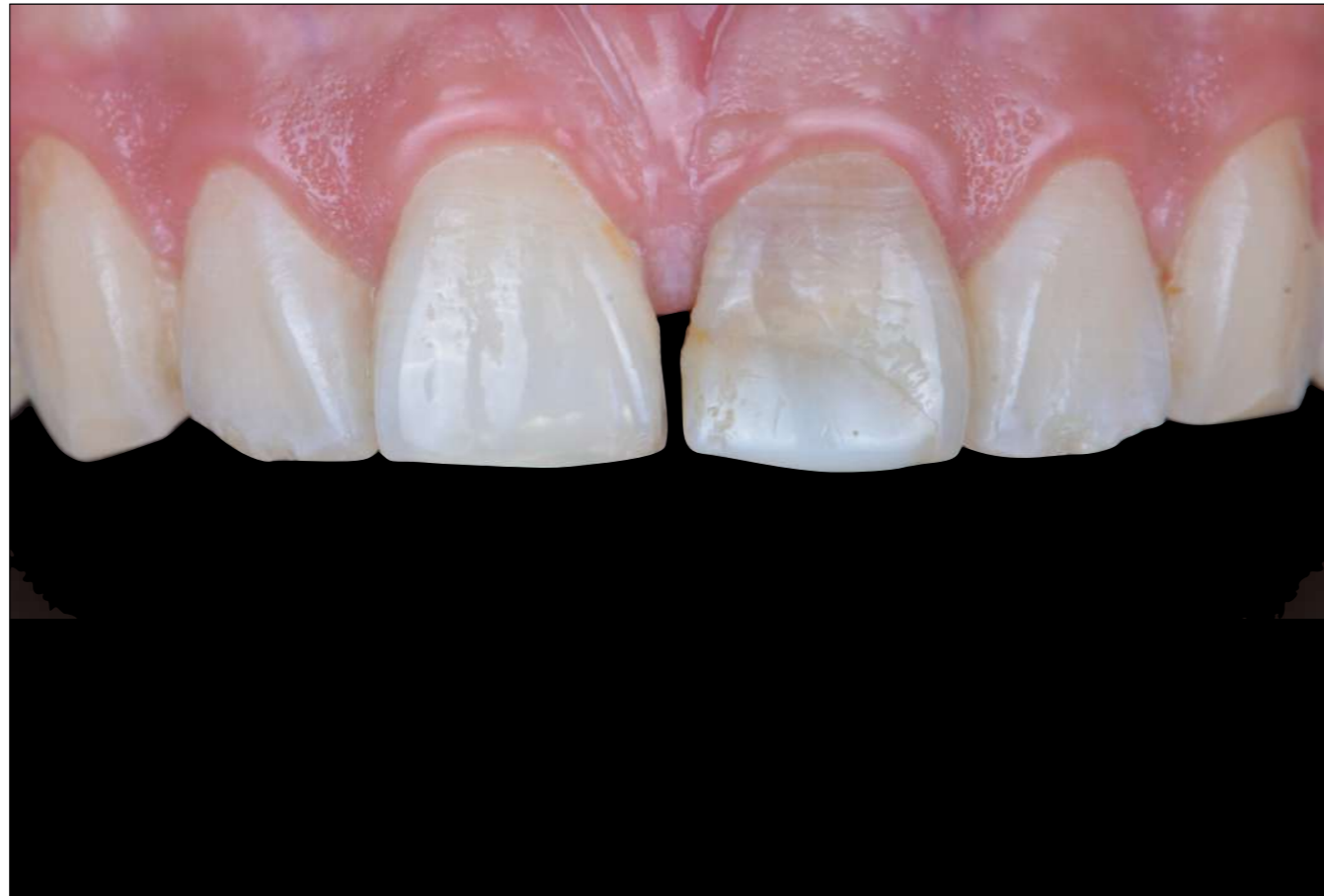
IRAQ

alihhh404@yahoo.com

SLIDE: Esthetic and functional integration with direct composite



Esthetic and functional integration with direct composite



INTRODUCTION

Modern dentistry enables us to rely on fast and simple protocols to reach a satisfying result. Proper planning and observation will help in choosing the best technique and the right composite material.



Fig. 01

A young patient came to the clinic with defect old restoration central incisor, asking to restore this tooth.



Fig. 01
Shade selection



Fig. 01
Shade selection

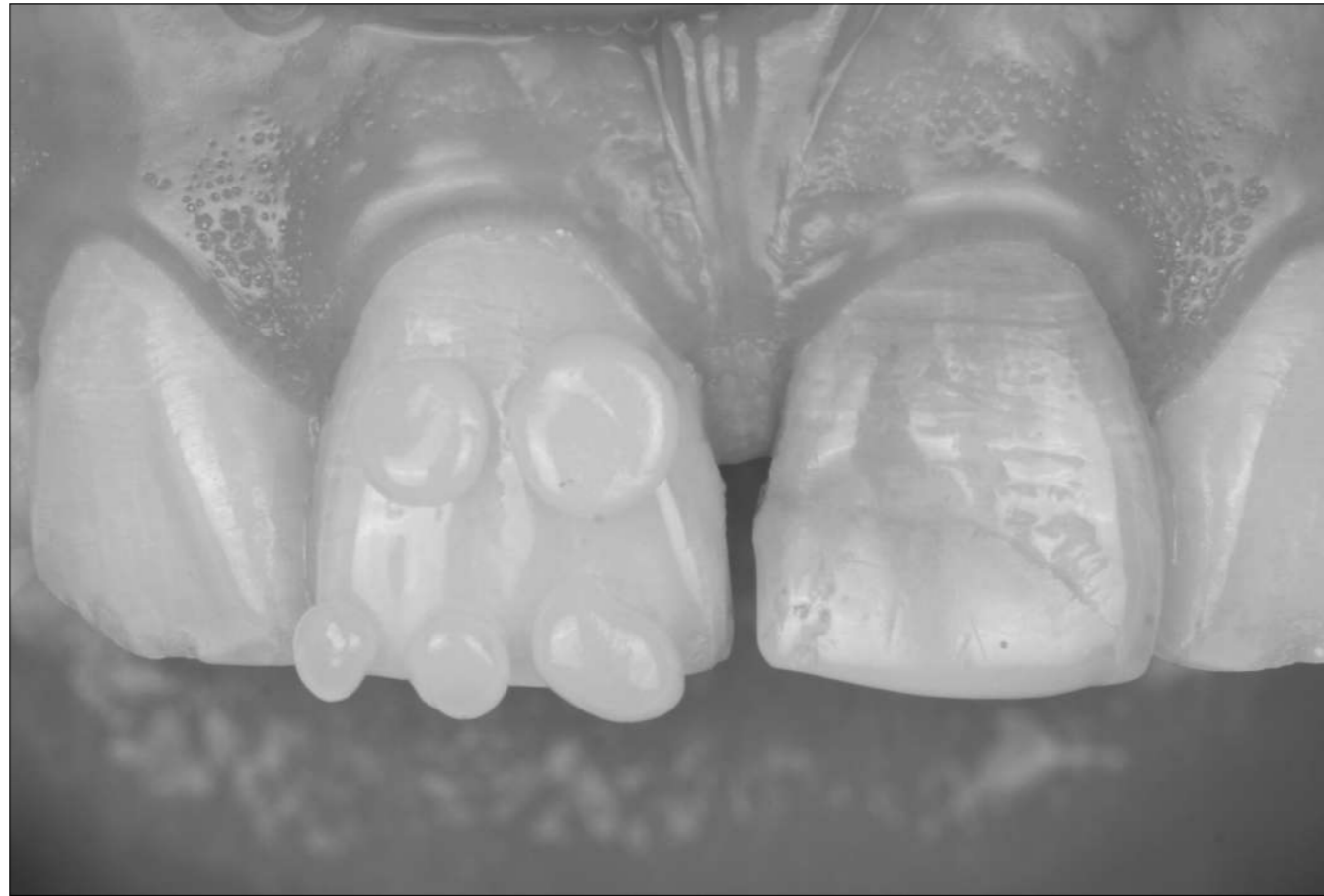


Fig. 01
Shade selection



Fig. 02
The rubberdam is installed in order to isolate the teeth from any contamination and to focus more easily.



Fig. 03
Orthophosphoric acid was applied for 20 seconds to prepare the enamel. After that, I thoroughly rinsed for 20 seconds, and dried carefully the entire tooth.



Fig. 04
Tooth surfaces after etching.

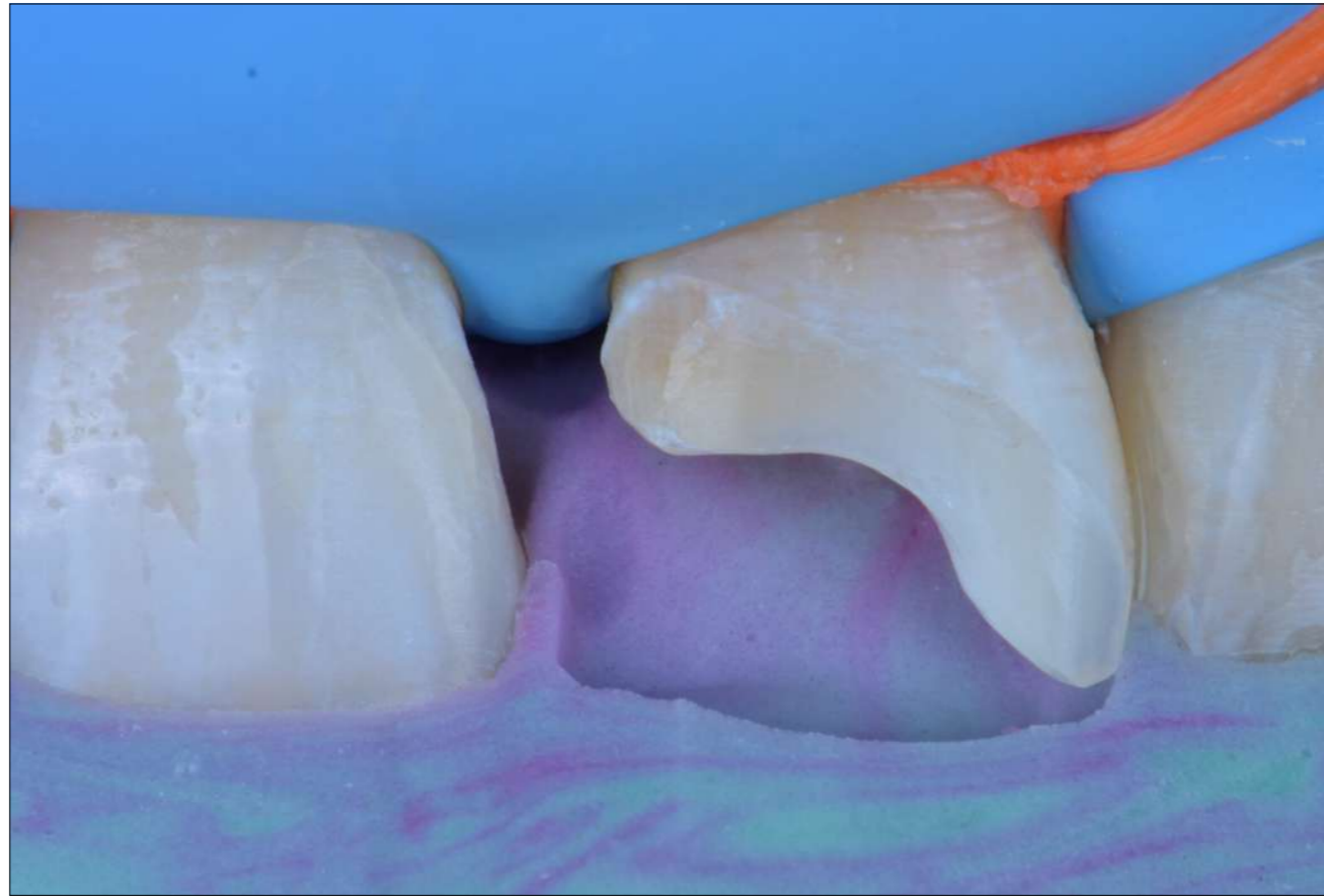


Fig. 06
The silicone index try in



Fig. 06
The palatal shell is modelled . The Enamel shade was layered by using CE shade from Tokuyama



Fig. 07
Inter proximal wall was built by using A2 body lx5 from tokuyama

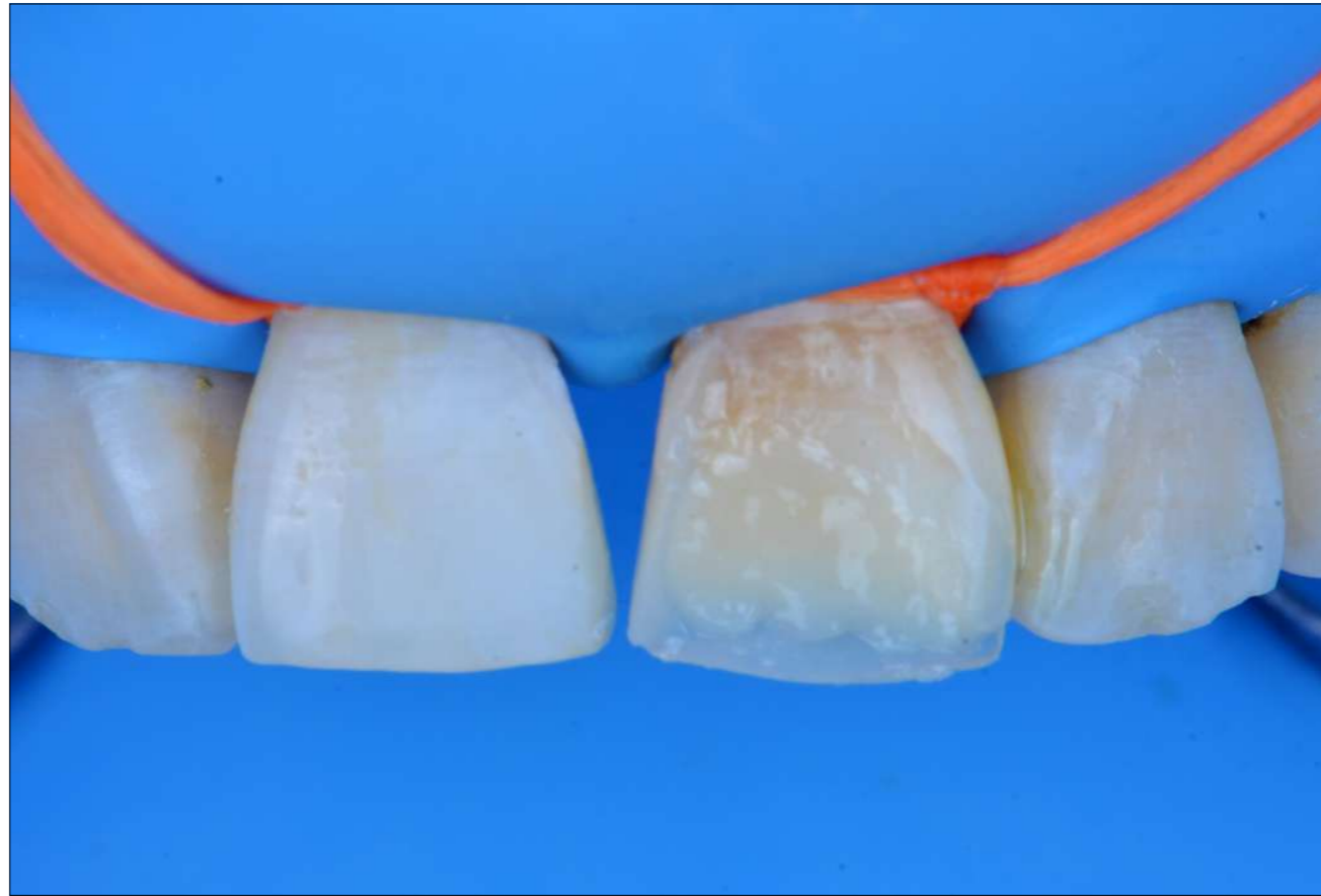


Fig. 08
For dentin and masking the color we use OA2 FROM TOKUYAMA and
application of white colour effect using LM-Arte Fissura instrument.
with a very small brush can also be used in a tapping motion to distribute and absorb a possible overdose.



Fig. 09
After application of the final enamel layer, before finishing, we used A2 BODY FROM TOKUYAMA



Fig. 10
The next step is getting your transitional lines.



Fig. 15
Aesthetic appearance after polishing. It stands out the natural shine of the enamel surface.



Fig. 16
Final situation.
Natural integration of the composite resins with the dental tissue, giving to the restorations a very natural look.



CONCLUSIONS

The main goal of performing direct restorations with composite resins is to handle an easy workflow that allows the clinician to have a predictable, natural, functional and long lasting result. A continuous evolution of the adhesive systems and dental materials allow the professional to achieve aesthetic results for long term restorations.