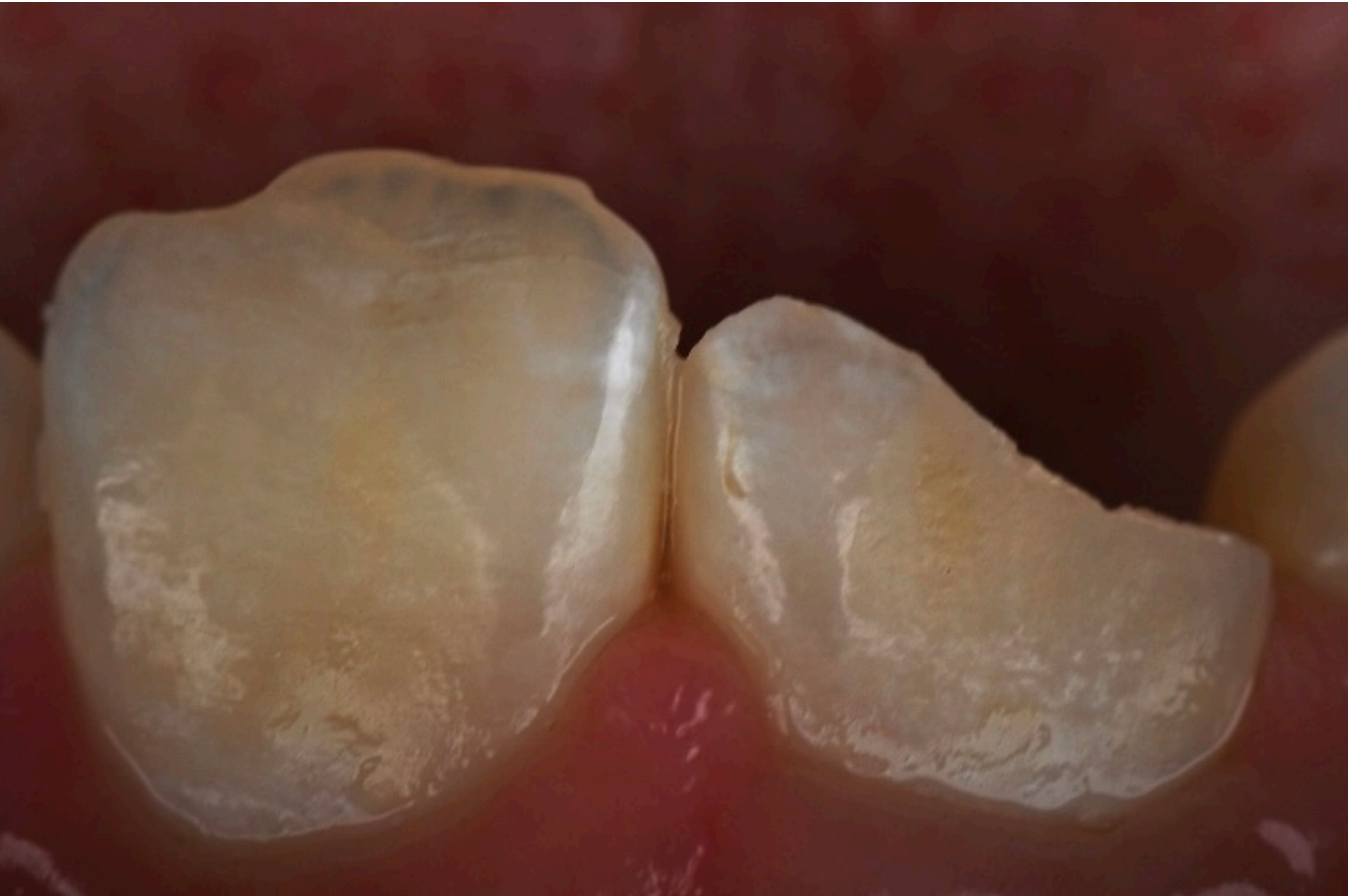


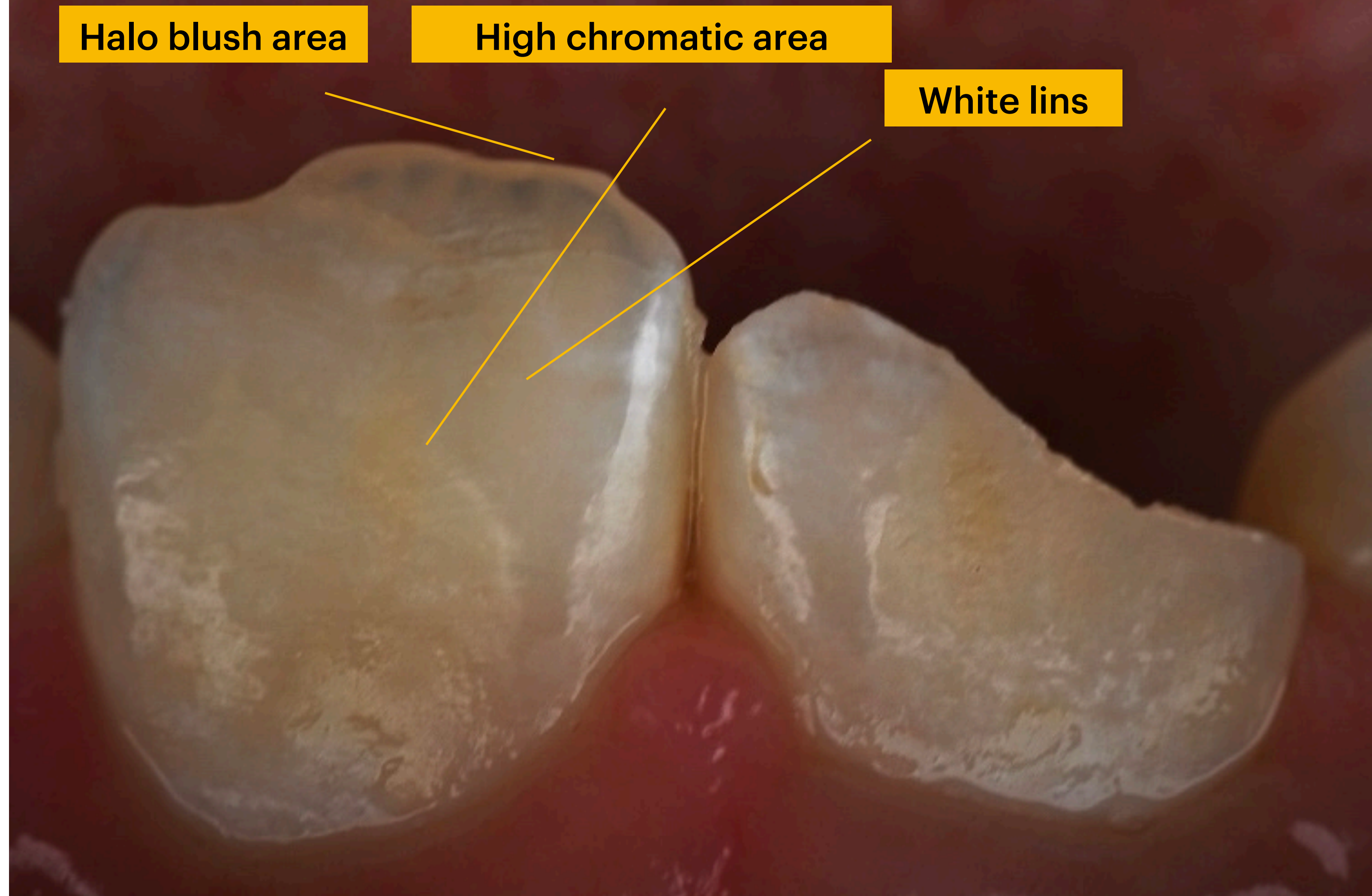
# Analysing of shade selection



*Dr. Gaith Matar*



Intra oral photo was taken to analyse the shape , morphology and the shade .



Due to initially analysis multiple shades was defined ( halo effect ,transvers white lins and blush area ) .



After isolation for two centrals , beveling was made , then polished to remove any interference between the filling and tooth structure .



Due to clear area incisally , palatal shell was made with ( Ce shade from tokuyama ) .



Blocker ( ominochroma ) was added , then  
( OA2 with white tint ) .



Finally , clear estallete ( for halo effect incisally ) ,  
with ominochroma as final layer .





Final intraoral photo after finishing and polishing ,  
using ( enhance burs , 3M disks , Jota kit ) .



After one week follow up ( note the high shinny effect which is an amazing properties provide by tokuyama composite) .

# Conclusion

By defined ( shape and shade of the restoration , made the work easier , with using of high quality material is the key for successful filling ).

# References

Layers , atlas of dental composite , layer 2