

Direct Composite Restoration

CASE REPORT



By
Ahmed Saleh

Feb 2024

About the case

Introduction: The purpose of a restoration is to restore the shape, function, and phonetics and aesthetics of damaged teeth. The disadvantage of direct composite restorations is the formation of dental anatomical structures that require operator skills so that they can optimally restore tooth occlusion. Case report: A 16-year-old female patient came to the clinic complaining of food impaction on tooth number 46, which presented carious infiltration and the patient's dental diagnosis was Reversible Pulpitis

Outcome



Fig.1

An occlusal preoperative view of existing Class II caries in tooth numbers 46.



Fig.2

After application of the rubber dam.

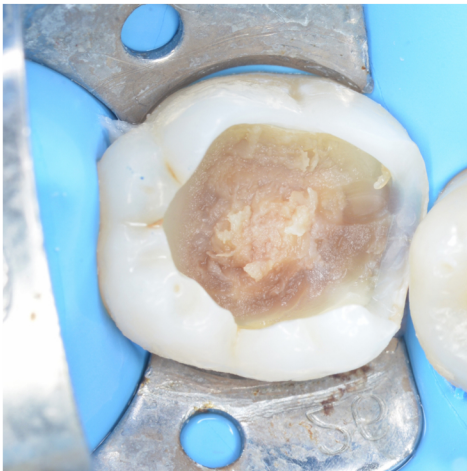


Fig.3

After isolation, it was possible to proceed to cavity cleaning.

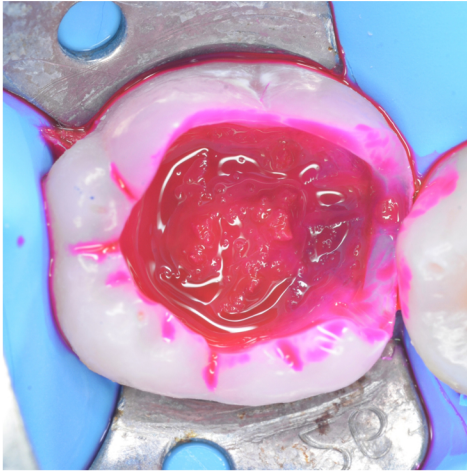


Fig.4
Using caries detector dye



Fig.5
Excavation of the infected carious dentin.

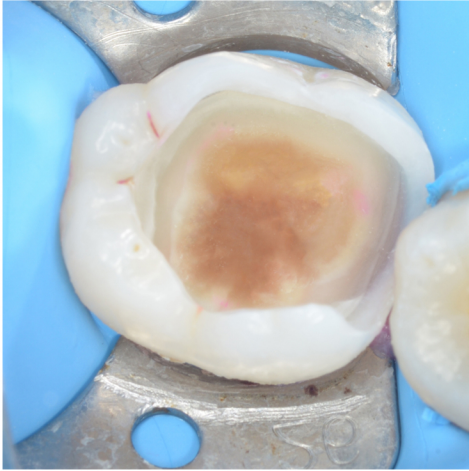


Fig.6

Decayed tissue was removed. Enamel was finished with fine burs to prevent the detachment of unsupported enamel prisms and micro-leakage.

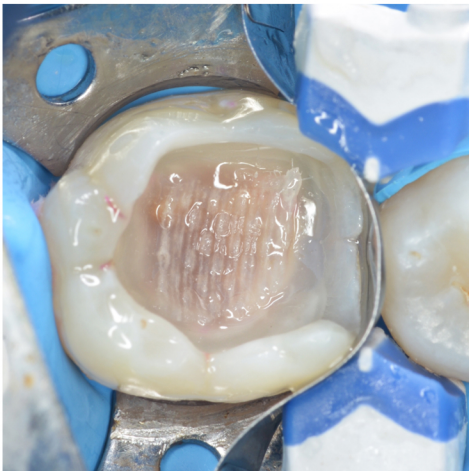


Fig.7

Matrix was placed and secured with a wedge, to allow the matrix to embrace the tooth, we used a special NiTi ring, which presses the matrix onto the proximal wall, and creates forces that enhance separation between walls to create an optimum seal during proximal modeling and a tight contact point.



Fig.8

PALFIQUE OMNICHROMA was used as Enamel replacement.
Immediate result before finishing and polishing.

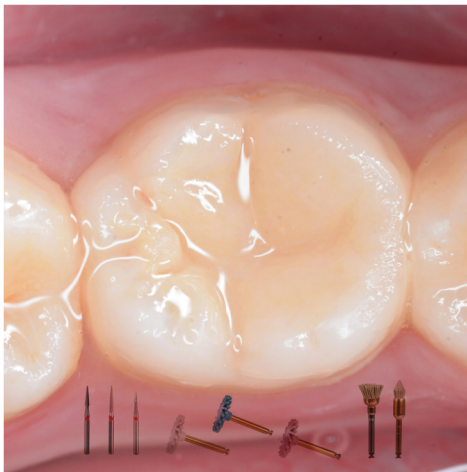


Fig.9

After layering the occlusal anatomy, the restoration was polished.



Fig.10

Before and after this picture was taken after two weeks.

Conclusion

The reconstruction of the original anatomical structures is a very important, as every groove, fossa and ridge have their role in functional contacts and movements. So when a tooth is restored according to an anatomically guided pattern, very few occlusal adjustments are required.