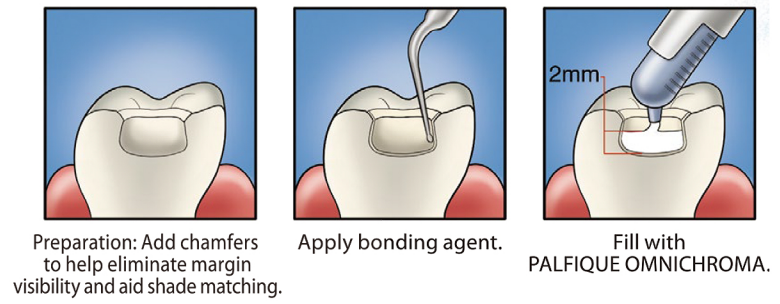


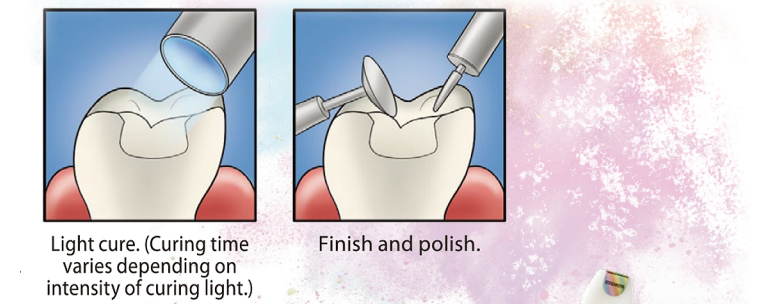
Omnichroma BLOCKER



omniCHROMA



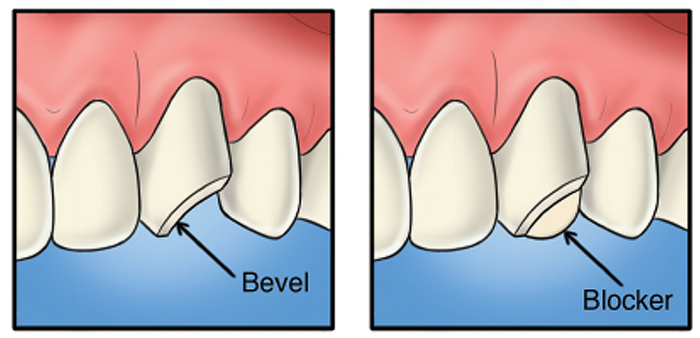
Preparation: Add chamfers to help eliminate margin visibility and aid shade matching. Apply bonding agent. Fill with PALFIQUE OMNICHROMA.



Light cure. (Curing time varies depending on intensity of curing light.) Finish and polish.



Technique Guide

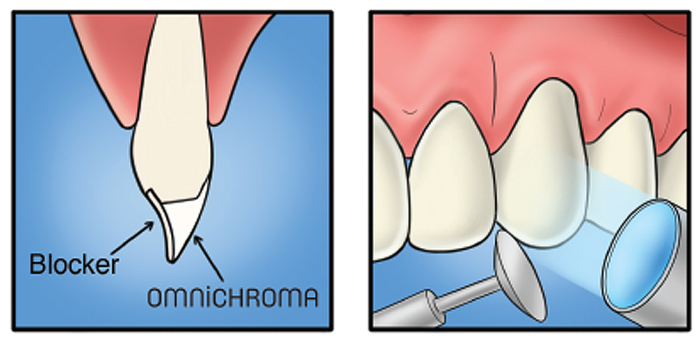


Preparation

Preparation and apply bonding: Add bevels to help eliminate margin visibility and aid shade matching.

Bonding

Apply BLOCKER as a lingual layer. Thickness of the lingual layer can vary, but 0.5mm is illustrated as a guide. Light cure.

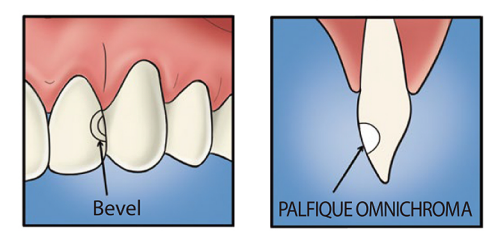


OMNICHROMA filling

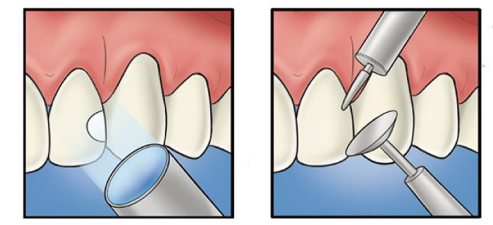
Apply OMNICHROMA as a secondary layer.

Light curing & finishing

Light cure, finish, and polish. (Curing time varies depending on intensity of curing light.)



Preparation: Add bevels to help eliminate margin visibility and aid shade matching. Apply bonding agent and fill PALFIQUE OMNICHROMA.

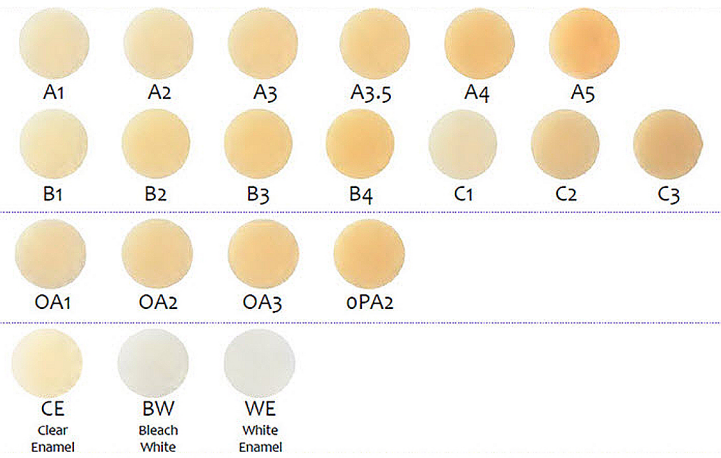


Light cure. (Curing time varies depending on intensity of curing light.) Finish and polish.

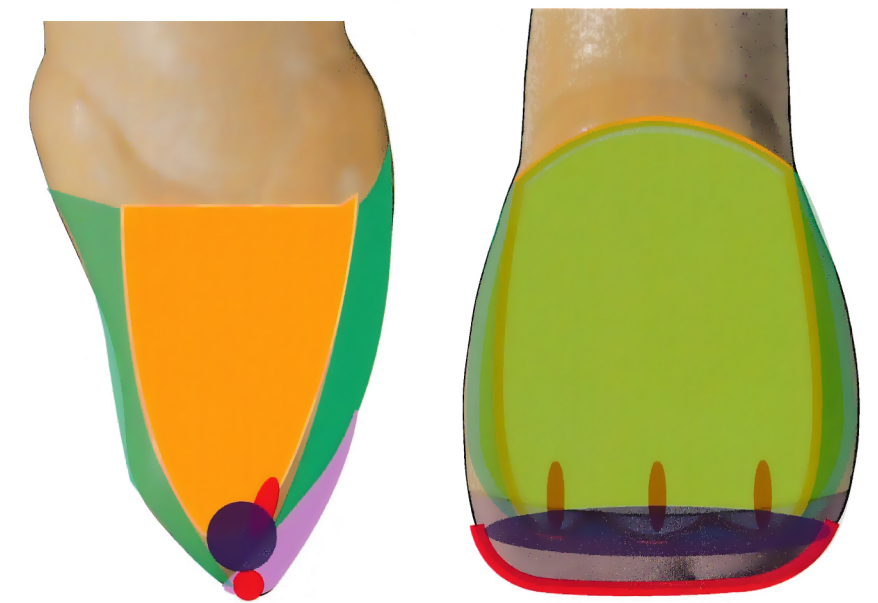
Anterior layering technique By : Kazunori Otani & Omnichroma and Blocker technique



PALFIQUE LX5



Estelite Color



Dentin **OPA2**
 Enamel **A1**
 Tint **ESTELITE COLOR**
 Clear **ESTELITE COLOR**
 Trance **CE**

By : Kazunori Otani